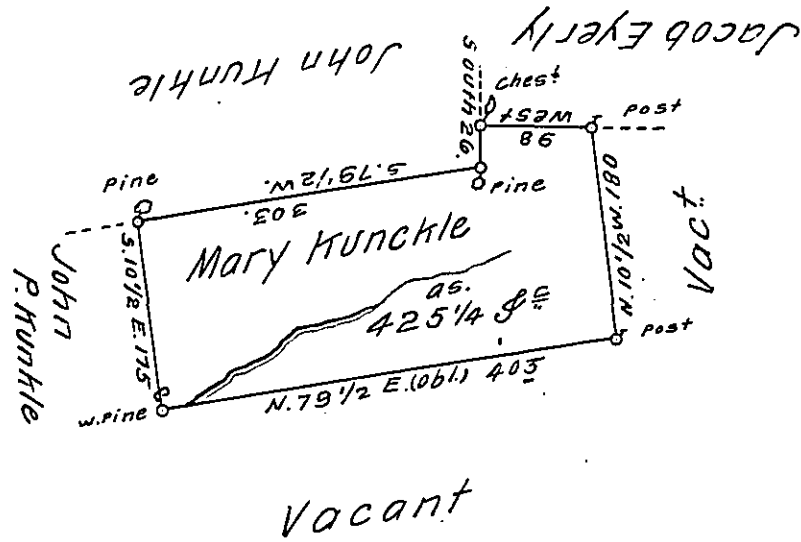


Hazle -
Luzerne.



A Draft of a tract of Land Called W. Oak Valley. Situate on a Small Branch of Cramberŷ Creek Joining Land of John Kunkle and others in the County of Northumb^d. Containing four Hundred and twenty five acres ^{Mary} 1/4 & Allowance. Surveyed for ~~John~~ Kunkle the 6th day of March 1794 by Virtue of a Warrant dated the 14th day of Feby 1794.

Daniel Brodhead Esq^r }
Surv^r Gen^l }

by W^m Gray D.S.

IN TESTIMONY that the above is a copy of the original remaining on file in the Department of Internal Affairs of Pennsylvania, made conformably to an Act of Assembly approved the 16th day of February, 1833, I have hereunto set my Hand and caused the Seal of said Department to be affixed at Harrisburg, this fifth day of February 1912.

Henry Howell
Secretary of Internal Affairs.